



Welcome to **Broadwater Grove** Care Community



Discover why this could be your best move yet

At Broadwater Grove Care Community we encourage our residents to live a life of meaning and purpose. That's why understanding the big and the little details about how you like to live each day is important to us – so that we can help you feel at home, have the right support and live your best life in our care.

Located in Southport on the heart of the Gold Coast, the Broadwater Parklands, local beaches and Australia Fair Shopping Centre are just minutes away. Our charming Care Community retains features of its heritage including lead light windows and timber fireplaces, within a modern facade. We have strong community ties, including an active intergenerational program with Griffith University, enjoyed by both the young and the young-at-heart; and our unique partnership with Thread Together which gives residents access to brand new clothes of their choice.

Ageing is living

Experience the Opal HealthCare difference at Broadwater Grove



Daily life

We encourage our residents to pursue their interests, be they arts and craft, spending time outdoors, or enjoying our Virtual and Augmented Reality experiences that support cognition and reminiscence. Nintendo Wii is a popular and healthy way for residents to stay active. Our menus are chosen together by our Chef and residents, and through our partnership with charity Thread Together, residents enjoy shopping either on-line or at an occasional pop-up clothing store, choosing brand new clothing items to refresh their wardrobe.

With us, you're free to enjoy your interests, independently or with others, continue to learn and try new things, and participate in Broadwater Grove life – so you can enjoy your day, your way.



Health & wellbeing

- Seasonal menus
- Dedicated lifestyle team onsite
- Cultural and faith-based community supports
- Dedicated Opal Healthcare bus for community outings
- Technology including VR, AR and e-Pets to entertain, engage, educate, and connect with family and friends



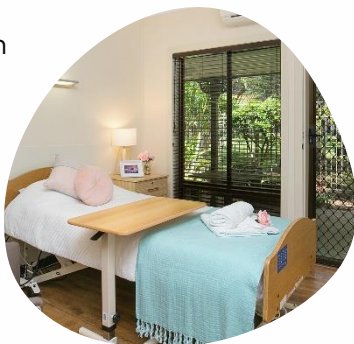
Home

- Modern rooms feature single bed, bedside table, armchair, built-in wardrobes, flat screen TV and soft furnishings
- 2 room types, single or companion share rooms, up to 22m²
- Well-appointed lounge, dining areas and activity areas
- Landscaped courtyard garden
- Hair salon



Care

- Registered nurses onsite 24/7
- Experienced leadership and team
- Fresh and nutritious chef prepared meals
- Primary and allied health available
- Secure memory care neighbourhood
- Permanent, respite, dementia and palliative care



Get in touch

Our dedicated relationship management and admissions support team are here to walk you through the often daunting process of choosing and moving into aged care.

Our purpose is to bring joy to those we care for.

Phone: 07 5557 7700

Email: broadwatergrove@opalhealthcare.com.au

Address: 55 Worendo Street, Southport QLD 4215

Website: opalhealthcare.com.au

Part of the  **Opal HealthCare** family